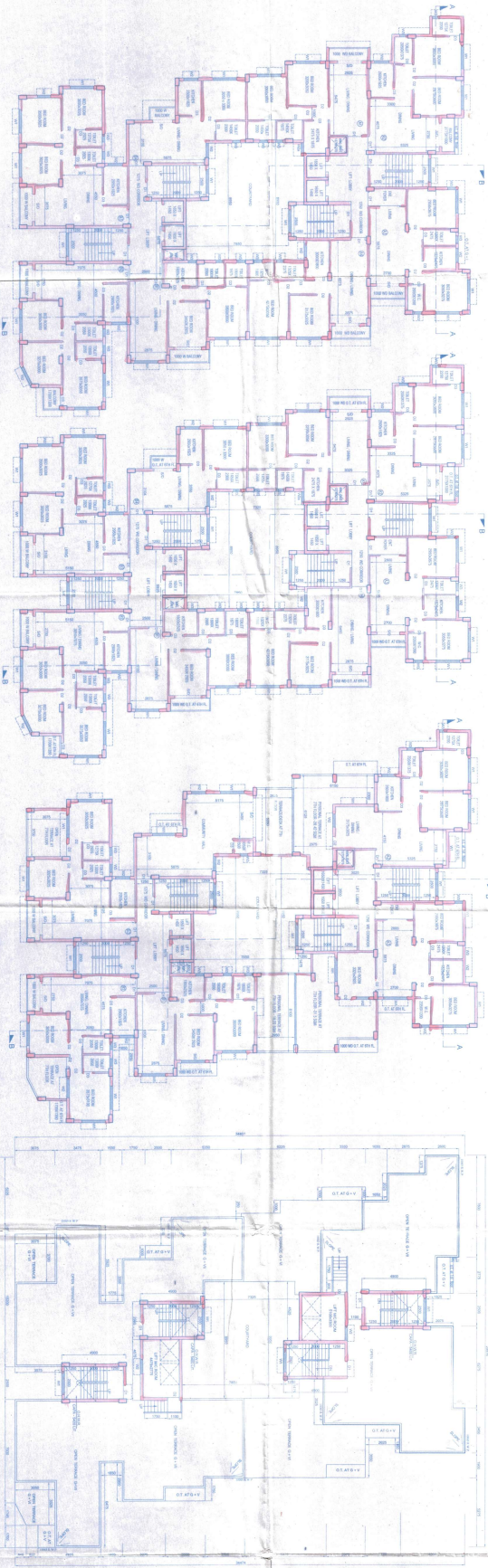


TYPICAL FLOOR PLAN
(SEE 102/103)

5TH FLOOR PLAN

7TH FLOOR PLAN

ROOF PLAN

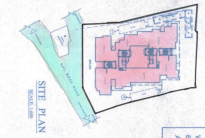
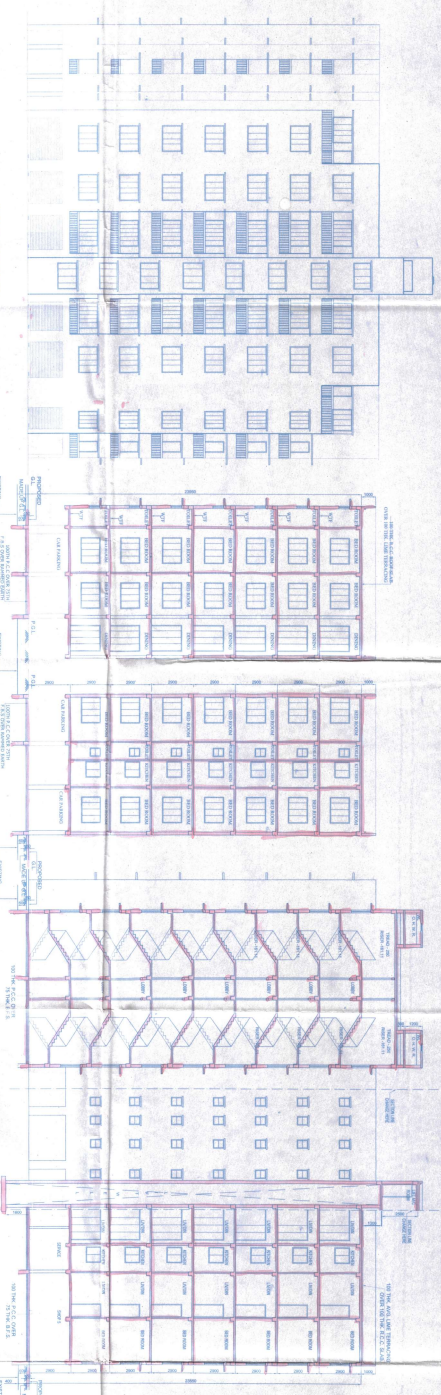


FRONT ELEVATION

SECTION ON A-A

SECTION ON B-B

LOCATION PLAN



- NOTES**
1. ALL EXTERIOR WALLS IN R.M.
 2. ALL EXTERIOR WALLS IN R.M. AND INTERNAL WALLS
 3. BLOCK - 1:100
 4. EXTERIOR FINISHES TO BE AS PER ARCHITECT'S DRAWINGS
 5. EXTERIOR FINISHES TO BE AS PER ARCHITECT'S DRAWINGS
 6. EXTERIOR FINISHES TO BE AS PER ARCHITECT'S DRAWINGS
 7. EXTERIOR FINISHES TO BE AS PER ARCHITECT'S DRAWINGS
 8. EXTERIOR FINISHES TO BE AS PER ARCHITECT'S DRAWINGS
 9. EXTERIOR FINISHES TO BE AS PER ARCHITECT'S DRAWINGS
 10. EXTERIOR FINISHES TO BE AS PER ARCHITECT'S DRAWINGS
 11. EXTERIOR FINISHES TO BE AS PER ARCHITECT'S DRAWINGS
 12. EXTERIOR FINISHES TO BE AS PER ARCHITECT'S DRAWINGS

- SPECIFICATIONS**
1. 75 TH. 18T CLASS BRICK SOLID AND FOUNDATION & FLOOR
 2. 150 TH. 13.8 CEMENT SAND & 10% CEMENT CONCRETE
 3. 150 TH. 13.8 CEMENT SAND & 10% CEMENT CONCRETE
 4. 150 TH. 13.8 CEMENT SAND & 10% CEMENT CONCRETE
 5. 150 TH. 13.8 CEMENT SAND & 10% CEMENT CONCRETE
 6. 150 TH. 13.8 CEMENT SAND & 10% CEMENT CONCRETE
 7. 150 TH. 13.8 CEMENT SAND & 10% CEMENT CONCRETE
 8. 150 TH. 13.8 CEMENT SAND & 10% CEMENT CONCRETE
 9. 150 TH. 13.8 CEMENT SAND & 10% CEMENT CONCRETE
 10. 150 TH. 13.8 CEMENT SAND & 10% CEMENT CONCRETE
 11. 150 TH. 13.8 CEMENT SAND & 10% CEMENT CONCRETE
 12. 150 TH. 13.8 CEMENT SAND & 10% CEMENT CONCRETE

DECLARATION OF E.B.A.

I, the undersigned, being a duly qualified and licensed Architect, do hereby certify that the above described building is in accordance with the provisions of the Building Act and the Building Regulations, and that the same has been constructed in accordance with the approved plans and specifications, and that the same is fit for the purpose intended therefor.

STRUCTURAL CERTIFICATE

THE STRUCTURAL DESIGN AND CONSTRUCTION OF THE FOUNDATION AND SUPERSTRUCTURE OF THE BUILDING HAS BEEN MADE BY ME, ARCHITECT, IN ALL RESPECTS.

APPROVED FOR SALE

OFFICE USE ONLY

APPROVED

DATE: 10/10/2010

PROJECT

RESIDENTIAL BUILDINGS AT
 28, 30, 32, 34, 36, 38, 40, 42, 44, 46, 48, 50, 52, 54, 56, 58, 60, 62, 64, 66, 68, 70, 72, 74, 76, 78, 80, 82, 84, 86, 88, 90, 92, 94, 96, 98, 100, 102, 104, 106, 108, 110, 112, 114, 116, 118, 120, 122, 124, 126, 128, 130, 132, 134, 136, 138, 140, 142, 144, 146, 148, 150, 152, 154, 156, 158, 160, 162, 164, 166, 168, 170, 172, 174, 176, 178, 180, 182, 184, 186, 188, 190, 192, 194, 196, 198, 200, 202, 204, 206, 208, 210, 212, 214, 216, 218, 220, 222, 224, 226, 228, 230, 232, 234, 236, 238, 240, 242, 244, 246, 248, 250, 252, 254, 256, 258, 260, 262, 264, 266, 268, 270, 272, 274, 276, 278, 280, 282, 284, 286, 288, 290, 292, 294, 296, 298, 300, 302, 304, 306, 308, 310, 312, 314, 316, 318, 320, 322, 324, 326, 328, 330, 332, 334, 336, 338, 340, 342, 344, 346, 348, 350, 352, 354, 356, 358, 360, 362, 364, 366, 368, 370, 372, 374, 376, 378, 380, 382, 384, 386, 388, 390, 392, 394, 396, 398, 400, 402, 404, 406, 408, 410, 412, 414, 416, 418, 420, 422, 424, 426, 428, 430, 432, 434, 436, 438, 440, 442, 444, 446, 448, 450, 452, 454, 456, 458, 460, 462, 464, 466, 468, 470, 472, 474, 476, 478, 480, 482, 484, 486, 488, 490, 492, 494, 496, 498, 500, 502, 504, 506, 508, 510, 512, 514, 516, 518, 520, 522, 524, 526, 528, 530, 532, 534, 536, 538, 540, 542, 544, 546, 548, 550, 552, 554, 556, 558, 560, 562, 564, 566, 568, 570, 572, 574, 576, 578, 580, 582, 584, 586, 588, 590, 592, 594, 596, 598, 600, 602, 604, 606, 608, 610, 612, 614, 616, 618, 620, 622, 624, 626, 628, 630, 632, 634, 636, 638, 640, 642, 644, 646, 648, 650, 652, 654, 656, 658, 660, 662, 664, 666, 668, 670, 672, 674, 676, 678, 680, 682, 684, 686, 688, 690, 692, 694, 696, 698, 700, 702, 704, 706, 708, 710, 712, 714, 716, 718, 720, 722, 724, 726, 728, 730, 732, 734, 736, 738, 740, 742, 744, 746, 748, 750, 752, 754, 756, 758, 760, 762, 764, 766, 768, 770, 772, 774, 776, 778, 780, 782, 784, 786, 788, 790, 792, 794, 796, 798, 800, 802, 804, 806, 808, 810, 812, 814, 816, 818, 820, 822, 824, 826, 828, 830, 832, 834, 836, 838, 840, 842, 844, 846, 848, 850, 852, 854, 856, 858, 860, 862, 864, 866, 868, 870, 872, 874, 876, 878, 880, 882, 884, 886, 888, 890, 892, 894, 896, 898, 900, 902, 904, 906, 908, 910, 912, 914, 916, 918, 920, 922, 924, 926, 928, 930, 932, 934, 936, 938, 940, 942, 944, 946, 948, 950, 952, 954, 956, 958, 960, 962, 964, 966, 968, 970, 972, 974, 976, 978, 980, 982, 984, 986, 988, 990, 992, 994, 996, 998, 1000.

SAVALISON ASSOCIATES CONSULTANT PVT. LTD.

DWG NO. - 02/12

APPROVED FOR SALE

OFFICE USE ONLY

APPROVED

DATE: 10/10/2010

STANDARD FORM NO. 64
MAY 1962 EDITION
GSA FPMR (41 CFR) 101-11.6

UNITED STATES GOVERNMENT
OFFICE OF PERSONNEL MANAGEMENT
WASHINGTON, D. C. 20535

4-75000-101-11.6
1-75